

RESOLUTION # ⁵⁹-2017

Resolution offered by the Supervisors of the Public Works/Solid Waste Committee.

Resolved by the Board of Supervisors of Oneida County, Wisconsin:

WHEREAS, Oneida County was granted title or easement to a strip of land for purposes of Highway 51 right of way (see attached descriptions and maps); and,

WHEREAS, Wisconsin Statute s. 84.09(3)(b) requires that upon order of the Department of Transportation (DOT) the County shall transfer the above referenced lands to the DOT; and,

WHEREAS, the DOT has issued the order requiring the transfer of the above referenced strip of land more specifically described as: (Project ID T 05-4(1): Parcel 33; Part of Gov't Lot 2 and the SW1/4 of the NE1/4, Section 11, Township 39 North, Range 6 East; and,

WHEREAS, the order of the DOT requires that the County Clerk and the Highway Committee sign the attached quitclaim deed; and,

NOW, THEREFORE, BE IT RESOLVED, by the Oneida County Board of Supervisors that the lands described in the attached order and quitclaim deed be transferred to the Wisconsin Department of Transportation pursuant to Wisconsin Statute s. 84.09(3)(b); and,

BE IT FURTHER RESOLVED, that the Oneida County Clerk and Highway Committee are authorized and directed to sign the attached quitclaim deed.

Vote Required: Majority = _____ 2/3 Majority = _____ 3/4 Majority = _____

The County Board has the legal authority to adopt: Yes No _____ as reviewed by the Corporation Counsel, [Signature], Date: 7/27/17

Approved by the Public Works/Solid Waste Committee this 27th day of July, 2017.

Consent Agenda Item: YES NO

Offered and passage moved by:

[Signature]
Supervisor
[Signature]
Supervisor
[Signature]
Supervisor
[Signature]
Supervisor
[Signature]
Supervisor

Resolution - #59-2017

Supervisors	AYE	NAY	ABS	ABSTAIN
Cushing	X			
Pence	X			
Sorensen	X			
Freudenberg			X	
Zunker	X			
Winkler	X			
Paszak	X			
Kelly	X			
Metropulos	X			
Jensen	X			
VanRaalte	X			
Holewinski	X			
Young	X			
Mott	X			
Ives	X			
Pederson	X			
Oettinger			X	
Timmons	X			
Krolczyk	X			
Fried	X			
Hintz	X			
TOTALS	19		2	
TAGS				
Amanda Morgan				
Brigid Billing				
Ben	X			

August 14, 2017

Offered by the Public Works Committee approving the transfer of lands (Project ID T05-5(1): Parcel 33; Part of Gov't Lot 2 and the SW1/4 of the NE1/4, Section 11, Township 39 North, Range 6 East) to the Wisconsin Department of Transportation.

52
53
54
55
56
57
58
59
60
61
62
63
64
65
66
67
68
69
70

19 Ayes


0 Nays

2 Absent

0 Abstain

X Adopted

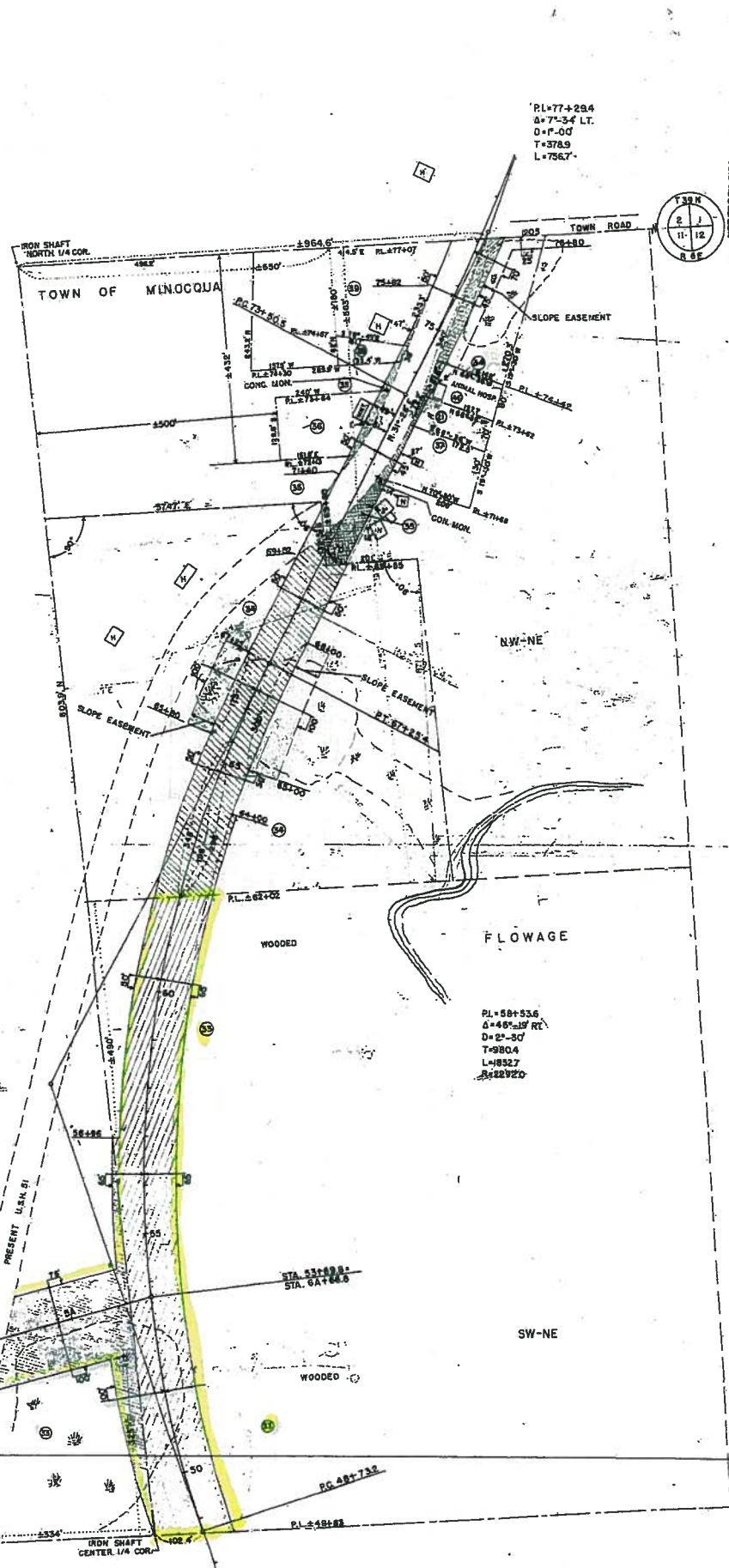
by the County Board of Supervisors this 15 day August, 2017.

Defeated

Tracy Hartman, County Clerk

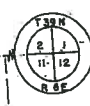

David Hintz, County Board Chair

See Page 2-10 for attachments.

COUNTY AND MUNICIPALITY	ROUTE AND LOCATION	CLASS AND PRECEDENCE	FORMER NUMBER	DATE ADDED	FILE NUMBER
431	54	211	WIS. 51	4.2	54



PL=77+29.4
 Δ=75.54 LT.
 D=1-P-00
 T=378.9
 L=756.7



NOT GEODESIC

STATE HIGHWAY COMMISSION OF WISCONSIN
 PLAT OF RIGHT OF WAY REQUIRED
 PROJECT NO. T. 05-4(11)

MINOCQUA-WOODRUFF ROAD
 U.S.H. NO. 51
 ONEIDA COUNTY
 WISCONSIN
 SCALE 1"=80'
 LENGTH IN FEET
 MILES

PL=58+53.6
 Δ=45.519 RT.
 D=2'-30"
 T=980.4
 L=852.7
 Δ=229.20

Now old
 70
 STA. 70
 TO FIFIELD

PRESENT U.S.H. 51

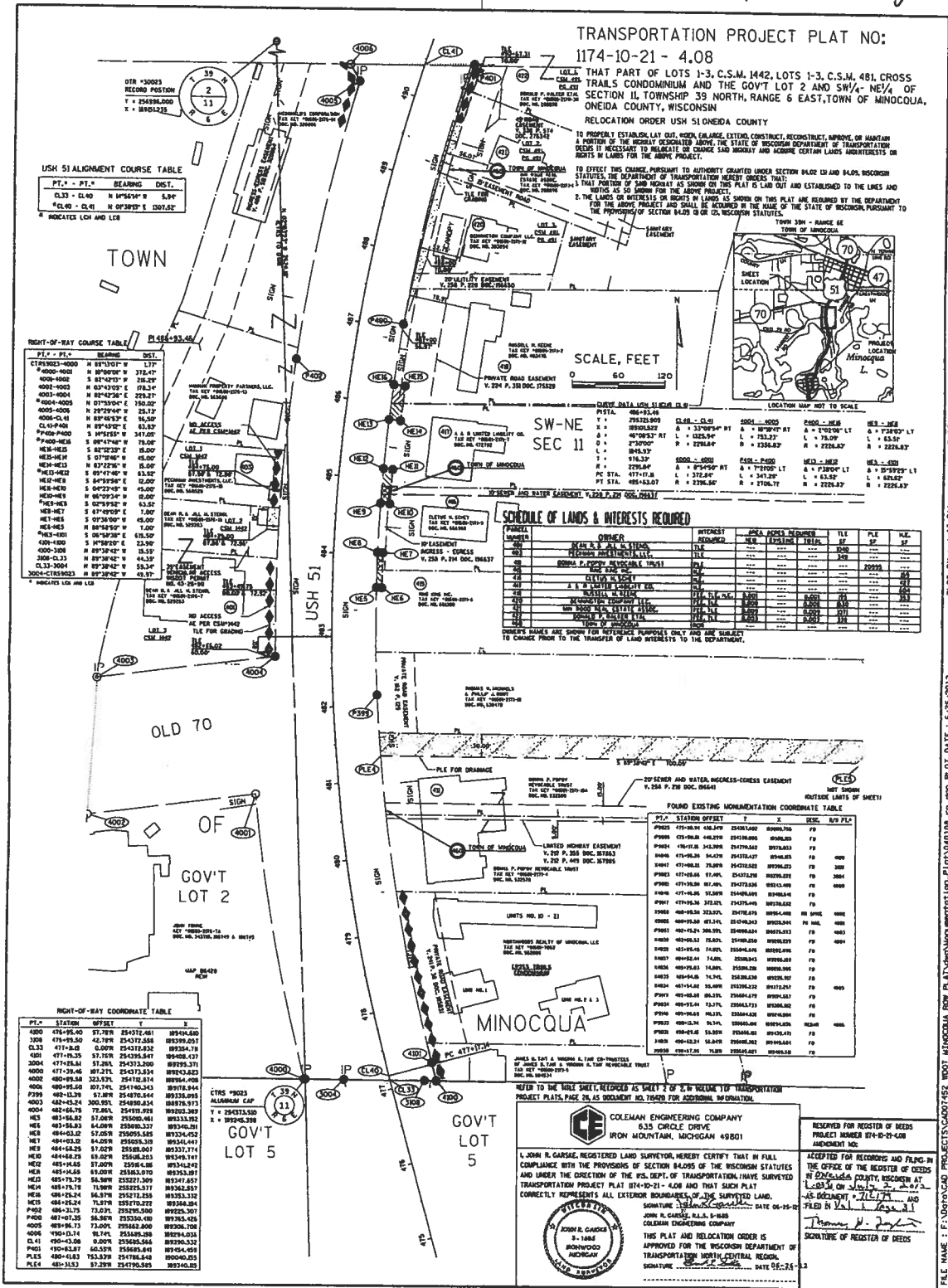
IRON SHAFT CENTER 1/4 COR.

STA. 53+88.8
 STA. 6A+64.6

PG. 487-732

PL=48+82

present Day



USH 51 ALIGNMENT COURSE TABLE

PT. - PT. BEARING DIST.
CL33 - CL40 N 89°54'41" W 5.94'
CL40 - CL41 N 0°33'55" E 1307.45'

* INDICATES LCH AND LCR

RIGHT-OF-WAY COURSE TABLE

PT. - PT. BEARING DIST.
CTRS 9023-4000 N 89°13'01" W 1.17'
4000-4001 N 89°00'00" W 216.29'
4001-4002 S 81°42'31" W 216.29'
4002-4003 N 82°33'03" E 216.29'
4003-4004 N 82°42'36" E 228.21'
4004-4005 N 07°13'00" E 750.02'
4005-4006 N 82°33'03" E 216.29'
4006-CL41 N 89°45'33" E 16.50'
CL41-4007 N 89°45'33" E 63.89'
4007-4008 S 14°25'55" E 347.05'
4008-4009 S 89°47'49" W 78.00'
4009-4010 S 87°52'03" E 82.00'
4010-4011 S 87°52'03" E 82.00'
4011-4012 S 89°47'49" W 63.82'
4012-4013 N 87°52'03" E 82.00'
4013-4014 S 89°47'49" W 63.82'
4014-4015 S 87°52'03" E 82.00'
4015-4016 S 87°52'03" E 82.00'
4016-4017 S 87°52'03" E 82.00'
4017-4018 S 87°52'03" E 82.00'
4018-4019 S 87°52'03" E 82.00'
4019-4020 S 87°52'03" E 82.00'
4020-4021 S 87°52'03" E 82.00'
4021-4022 S 87°52'03" E 82.00'
4022-4023 S 87°52'03" E 82.00'
4023-4024 S 87°52'03" E 82.00'
4024-4025 S 87°52'03" E 82.00'
4025-4026 S 87°52'03" E 82.00'
4026-4027 S 87°52'03" E 82.00'
4027-4028 S 87°52'03" E 82.00'
4028-4029 S 87°52'03" E 82.00'
4029-4030 S 87°52'03" E 82.00'
4030-4031 S 87°52'03" E 82.00'
4031-4032 S 87°52'03" E 82.00'
4032-4033 S 87°52'03" E 82.00'
4033-4034 S 87°52'03" E 82.00'
4034-4035 S 87°52'03" E 82.00'
4035-4036 S 87°52'03" E 82.00'
4036-4037 S 87°52'03" E 82.00'
4037-4038 S 87°52'03" E 82.00'
4038-4039 S 87°52'03" E 82.00'
4039-4040 S 87°52'03" E 82.00'
4040-4041 S 87°52'03" E 82.00'
4041-4042 S 87°52'03" E 82.00'
4042-4043 S 87°52'03" E 82.00'
4043-4044 S 87°52'03" E 82.00'
4044-4045 S 87°52'03" E 82.00'
4045-4046 S 87°52'03" E 82.00'
4046-4047 S 87°52'03" E 82.00'
4047-4048 S 87°52'03" E 82.00'
4048-4049 S 87°52'03" E 82.00'
4049-4050 S 87°52'03" E 82.00'
4050-4051 S 87°52'03" E 82.00'
4051-4052 S 87°52'03" E 82.00'
4052-4053 S 87°52'03" E 82.00'
4053-4054 S 87°52'03" E 82.00'
4054-4055 S 87°52'03" E 82.00'
4055-4056 S 87°52'03" E 82.00'
4056-4057 S 87°52'03" E 82.00'
4057-4058 S 87°52'03" E 82.00'
4058-4059 S 87°52'03" E 82.00'
4059-4060 S 87°52'03" E 82.00'
4060-4061 S 87°52'03" E 82.00'
4061-4062 S 87°52'03" E 82.00'
4062-4063 S 87°52'03" E 82.00'
4063-4064 S 87°52'03" E 82.00'
4064-4065 S 87°52'03" E 82.00'
4065-4066 S 87°52'03" E 82.00'
4066-4067 S 87°52'03" E 82.00'
4067-4068 S 87°52'03" E 82.00'
4068-4069 S 87°52'03" E 82.00'
4069-4070 S 87°52'03" E 82.00'
4070-4071 S 87°52'03" E 82.00'
4071-4072 S 87°52'03" E 82.00'
4072-4073 S 87°52'03" E 82.00'
4073-4074 S 87°52'03" E 82.00'
4074-4075 S 87°52'03" E 82.00'
4075-4076 S 87°52'03" E 82.00'
4076-4077 S 87°52'03" E 82.00'
4077-4078 S 87°52'03" E 82.00'
4078-4079 S 87°52'03" E 82.00'
4079-4080 S 87°52'03" E 82.00'
4080-4081 S 87°52'03" E 82.00'
4081-4082 S 87°52'03" E 82.00'
4082-4083 S 87°52'03" E 82.00'
4083-4084 S 87°52'03" E 82.00'
4084-4085 S 87°52'03" E 82.00'
4085-4086 S 87°52'03" E 82.00'
4086-4087 S 87°52'03" E 82.00'
4087-4088 S 87°52'03" E 82.00'
4088-4089 S 87°52'03" E 82.00'
4089-4090 S 87°52'03" E 82.00'
4090-4091 S 87°52'03" E 82.00'
4091-4092 S 87°52'03" E 82.00'
4092-4093 S 87°52'03" E 82.00'
4093-4094 S 87°52'03" E 82.00'
4094-4095 S 87°52'03" E 82.00'
4095-4096 S 87°52'03" E 82.00'
4096-4097 S 87°52'03" E 82.00'
4097-4098 S 87°52'03" E 82.00'
4098-4099 S 87°52'03" E 82.00'
4099-4100 S 87°52'03" E 82.00'
4100-4101 S 87°52'03" E 82.00'
4101-4102 S 87°52'03" E 82.00'
4102-4103 S 87°52'03" E 82.00'
4103-4104 S 87°52'03" E 82.00'
4104-4105 S 87°52'03" E 82.00'
4105-4106 S 87°52'03" E 82.00'
4106-4107 S 87°52'03" E 82.00'
4107-4108 S 87°52'03" E 82.00'
4108-4109 S 87°52'03" E 82.00'
4109-4110 S 87°52'03" E 82.00'
4110-4111 S 87°52'03" E 82.00'
4111-4112 S 87°52'03" E 82.00'
4112-4113 S 87°52'03" E 82.00'
4113-4114 S 87°52'03" E 82.00'
4114-4115 S 87°52'03" E 82.00'
4115-4116 S 87°52'03" E 82.00'
4116-4117 S 87°52'03" E 82.00'
4117-4118 S 87°52'03" E 82.00'
4118-4119 S 87°52'03" E 82.00'
4119-4120 S 87°52'03" E 82.00'
4120-4121 S 87°52'03" E 82.00'
4121-4122 S 87°52'03" E 82.00'
4122-4123 S 87°52'03" E 82.00'
4123-4124 S 87°52'03" E 82.00'
4124-4125 S 87°52'03" E 82.00'
4125-4126 S 87°52'03" E 82.00'
4126-4127 S 87°52'03" E 82.00'
4127-4128 S 87°52'03" E 82.00'
4128-4129 S 87°52'03" E 82.00'
4129-4130 S 87°52'03" E 82.00'
4130-4131 S 87°52'03" E 82.00'
4131-4132 S 87°52'03" E 82.00'
4132-4133 S 87°52'03" E 82.00'
4133-4134 S 87°52'03" E 82.00'
4134-4135 S 87°52'03" E 82.00'
4135-4136 S 87°52'03" E 82.00'
4136-4137 S 87°52'03" E 82.00'
4137-4138 S 87°52'03" E 82.00'
4138-4139 S 87°52'03" E 82.00'
4139-4140 S 87°52'03" E 82.00'
4140-4141 S 87°52'03" E 82.00'
4141-4142 S 87°52'03" E 82.00'
4142-4143 S 87°52'03" E 82.00'
4143-4144 S 87°52'03" E 82.00'
4144-4145 S 87°52'03" E 82.00'
4145-4146 S 87°52'03" E 82.00'
4146-4147 S 87°52'03" E 82.00'
4147-4148 S 87°52'03" E 82.00'
4148-4149 S 87°52'03" E 82.00'
4149-4150 S 87°52'03" E 82.00'
4150-4151 S 87°52'03" E 82.00'
4151-4152 S 87°52'03" E 82.00'
4152-4153 S 87°52'03" E 82.00'
4153-4154 S 87°52'03" E 82.00'
4154-4155 S 87°52'03" E 82.00'
4155-4156 S 87°52'03" E 82.00'
4156-4157 S 87°52'03" E 82.00'
4157-4158 S 87°52'03" E 82.00'
4158-4159 S 87°52'03" E 82.00'
4159-4160 S 87°52'03" E 82.00'
4160-4161 S 87°52'03" E 82.00'
4161-4162 S 87°52'03" E 82.00'
4162-4163 S 87°52'03" E 82.00'
4163-4164 S 87°52'03" E 82.00'
4164-4165 S 87°52'03" E 82.00'
4165-4166 S 87°52'03" E 82.00'
4166-4167 S 87°52'03" E 82.00'
4167-4168 S 87°52'03" E 82.00'
4168-4169 S 87°52'03" E 82.00'
4169-4170 S 87°52'03" E 82.00'
4170-4171 S 87°52'03" E 82.00'
4171-4172 S 87°52'03" E 82.00'
4172-4173 S 87°52'03" E 82.00'
4173-4174 S 87°52'03" E 82.00'
4174-4175 S 87°52'03" E 82.00'
4175-4176 S 87°52'03" E 82.00'
4176-4177 S 87°52'03" E 82.00'
4177-4178 S 87°52'03" E 82.00'
4178-4179 S 87°52'03" E 82.00'
4179-4180 S 87°52'03" E 82.00'
4180-4181 S 87°52'03" E 82.00'
4181-4182 S 87°52'03" E 82.00'
4182-4183 S 87°52'03" E 82.00'
4183-4184 S 87°52'03" E 82.00'
4184-4185 S 87°52'03" E 82.00'
4185-4186 S 87°52'03" E 82.00'
4186-4187 S 87°52'03" E 82.00'
4187-4188 S 87°52'03" E 82.00'
4188-4189 S 87°52'03" E 82.00'
4189-4190 S 87°52'03" E 82.00'
4190-4191 S 87°52'03" E 82.00'
4191-4192 S 87°52'03" E 82.00'
4192-4193 S 87°52'03" E 82.00'
4193-4194 S 87°52'03" E 82.00'
4194-4195 S 87°52'03" E 82.00'
4195-4196 S 87°52'03" E 82.00'
4196-4197 S 87°52'03" E 82.00'
4197-4198 S 87°52'03" E 82.00'
4198-4199 S 87°52'03" E 82.00'
4199-4200 S 87°52'03" E 82.00'
4200-4201 S 87°52'03" E 82.00'
4201-4202 S 87°52'03" E 82.00'
4202-4203 S 87°52'03" E 82.00'
4203-4204 S 87°52'03" E 82.00'
4204-4205 S 87°52'03" E 82.00'
4205-4206 S 87°52'03" E 82.00'
4206-4207 S 87°52'03" E 82.00'
4207-4208 S 87°52'03" E 82.00'
4208-4209 S 87°52'03" E 82.00'
4209-4210 S 87°52'03" E 82.00'
4210-4211 S 87°52'03" E 82.00'
4211-4212 S 87°52'03" E 82.00'
4212-4213 S 87°52'03" E 82.00'
4213-4214 S 87°52'03" E 82.00'
4214-4215 S 87°52'03" E 82.00'
4215-4216 S 87°52'03" E 82.00'
4216-4217 S 87°52'03" E 82.00'
4217-4218 S 87°52'03" E 82.00'
4218-4219 S 87°52'03" E 82.00'
4219-4220 S 87°52'03" E 82.00'
4220-4221 S 87°52'03" E 82.00'
4221-4222 S 87°52'03" E 82.00'
4222-4223 S 87°52'03" E 82.00'
4223-4224 S 87°52'03" E 82.00'
4224-4225 S 87°52'03" E 82.00'
4225-4226 S 87°52'03" E 82.00'
4226-4227 S 87°52'03" E 82.00'
4227-4228 S 87°52'03" E 82.00'
4228-4229 S 87°52'03" E 82.00'
4229-4230 S 87°52'03" E 82.00'
4230-4231 S 87°52'03" E 82.00'
4231-4232 S 87°52'03" E 82.00'
4232-4233 S 87°52'03" E 82.00'
4233-4234 S 87°52'03" E 82.00'
4234-4235 S 87°52'03" E 82.00'
4235-4236 S 87°52'03" E 82.00'
4236-4237 S 87°52'03" E 82.00'
4237-4238 S 87°52'03" E 82.00'
4238-4239 S 87°52'03" E 82.00'
4239-4240 S 87°52'03" E 82.00'
4240-4241 S 87°52'03" E 82.00'
4241-4242 S 87°52'03" E 82.00'
4242-4243 S 87°52'03" E 82.00'
4243-4244 S 87°52'03" E 82.00'
4244-4245 S 87°52'03" E 82.00'
4245-4246 S 87°52'03" E 82.00'
4246-4247 S 87°52'03" E 82.00'
4247-4248 S 87°52'03" E 82.00'
4248-4249 S 87°52'03" E 82.00'
4249-4250 S 87°52'03" E 82.00'
4250-4251 S 87°52'03" E 82.00'
4251-4252 S 87°52'03" E 82.00'
4252-4253 S 87°52'03" E 82.00'
4253-4254 S 87°52'03" E 82.00'
4254-4255 S 87°52'03" E 82.00'
4255-4256 S 87°52'03" E 82.00'
4256-4257 S 87°52'03" E 82.00'
4257-4258 S 87°52'03" E 82.00'
4258-4259 S 87°52'03" E 82.00'
4259-4260 S 87°52'03" E 82.00'
4260-4261 S 87°52'03" E 82.00'
4261-4262 S 87°52'03" E 82.00'
4262-4263 S 87°52'03" E 82.00'
4263-4264 S 87°52'03" E 82.00'
4264-4265 S 87°52'03" E 82.00'
4265-4266 S 87°52'03" E 82.00'
4266-4267 S 87°52'03" E 82.00'
4267-4268 S 87°52'03" E 82.00'
4268-4269 S 87°52'03" E 82.00'
4269-4270 S 87°52'03" E 82.00'
4270-4271 S 87°52'03" E 82.00'
4271-4272 S 87°52'03" E 82.00'
4272-4273 S 87°52'03" E 82.00'
4273-4274 S 87°52'03" E 82.00'
4274-4275 S 87°52'03" E 82.00'
4275-4276 S 87°52'03" E 82.00'
4276-4277 S 87°52'03" E 82.00'
4277-4278 S 87°52'03" E 82.00'
4278-4279 S 87°52'03" E 82.00'
4279-4280 S 87°52'03" E 82.00'
4280-4281 S 87°52'03" E 82.00'
4281-4282 S 87°52'03" E 82.00'
4282-4283 S 87°52'03" E 82.00'
4283-4284 S 87°52'03" E 82.00'
4284-4285 S 87°52'03" E 82.00'
4285-4286 S