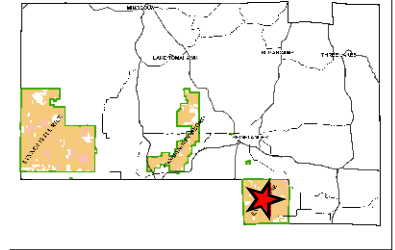
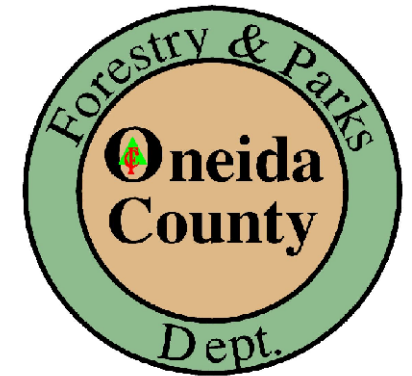


# ENTERPRISE BLOCK ONEIDA COUNTY FOREST



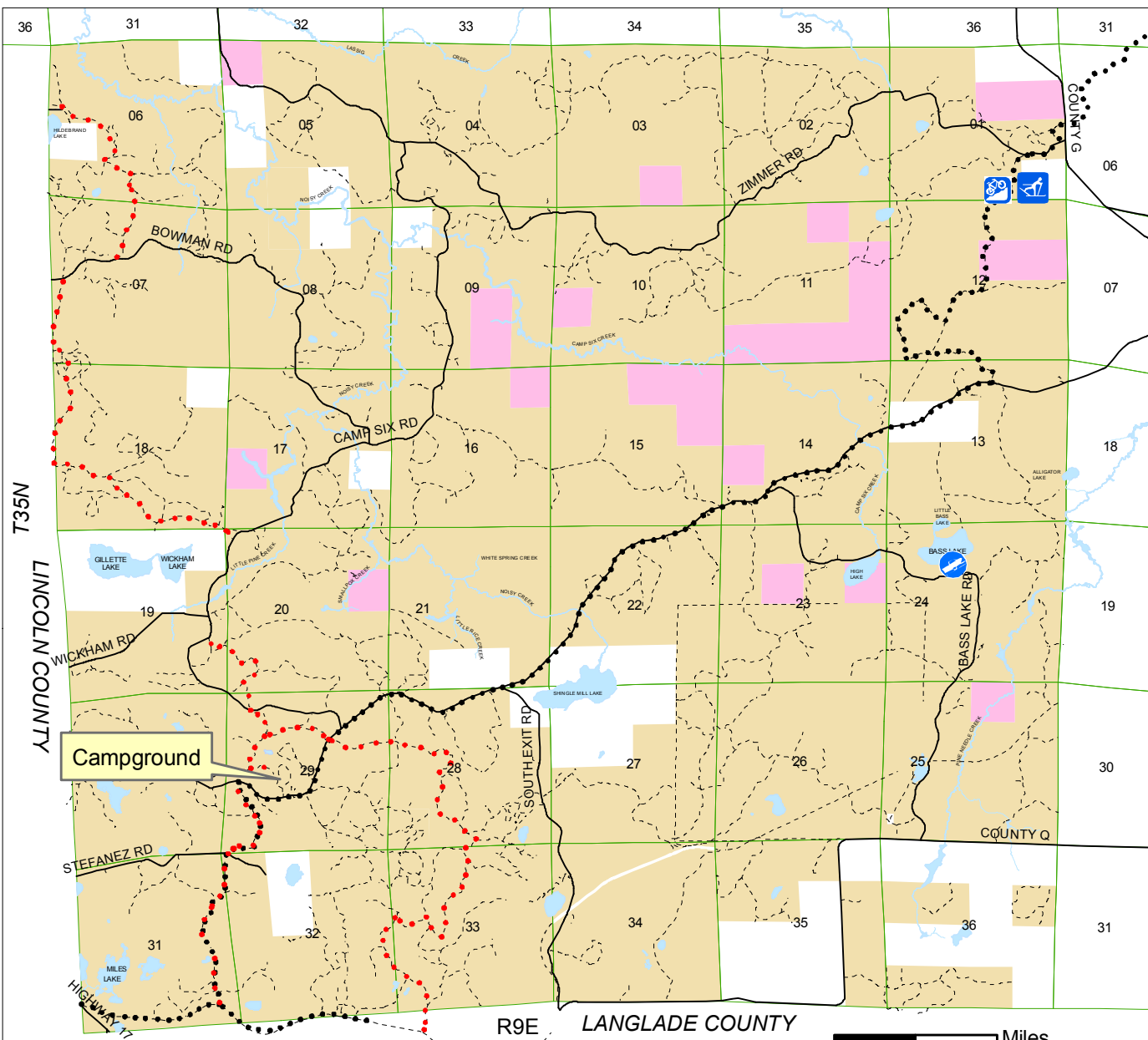
The Enterprise block of the Oneida County Forest is located in the southeast part of the County. This block consists of approximately 20000 acres. Hardwood, aspen, oak, balsam fir and spruce are the predominant cover types. There is very little private property within this block. A network of County Forest roads provides access to most of the block.

The topography of the area ranges from level quite steep. Ridges and ravines are numerous in this block. Several small creeks which are designated trout streams, along with several small lakes are found in this block. There are numerous large swamps, marshes and wetlands.

The Enterprise Campground and an ATV trail are found in the southwest part of this block. The Enterprise primitive skiing and fat tire biking trail is found in the northeast.

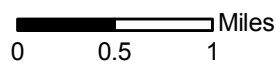
Many game and non-game wildlife species are common in the area. Among these are deer, bear, fishers, hawks and grouse. Active forest management has created a variety of cover types that support wildlife along with providing access to the forest.

Oneida County Forest  
PO Box 400 - Courthouse  
Rhinelander, WI 54501  
(715)369-6140



**LEGEND**

County Forest	Boat Landing	Public Roads
State Property	Ski Trail	Logging Roads
Waterbody	Fat Tire Bike Trail	Snowmobile Trails
		ATV Trails
		Section Lines



DATA SOURCES AND DISCLAIMERS:  
Information depicted on this map was interpreted from aerial photography and various other public and records. An attempt was made to accurately represent the information shown herein, however, recent changes in the physical and cultural landscape may not be represented. This map is intended for planning and general use only. Please refer to original source documents for detailed information. Please contact the Oneida County Forestry Office at (715)369-6140 if you discover any discrepancies on this map.  
Oneida County Forestry Department  
PO Box 400 - Courthouse  
Rhinelander, WI 54501